

Forston & Associates LLC

SCISSORS FLOOR LIFT

Super Sturdy, Virtually Maintenance Free, Reliable Lifts since 1991

Standard Features Include:

Non-skid, stained & varnished deck

High quality steel scissors lift

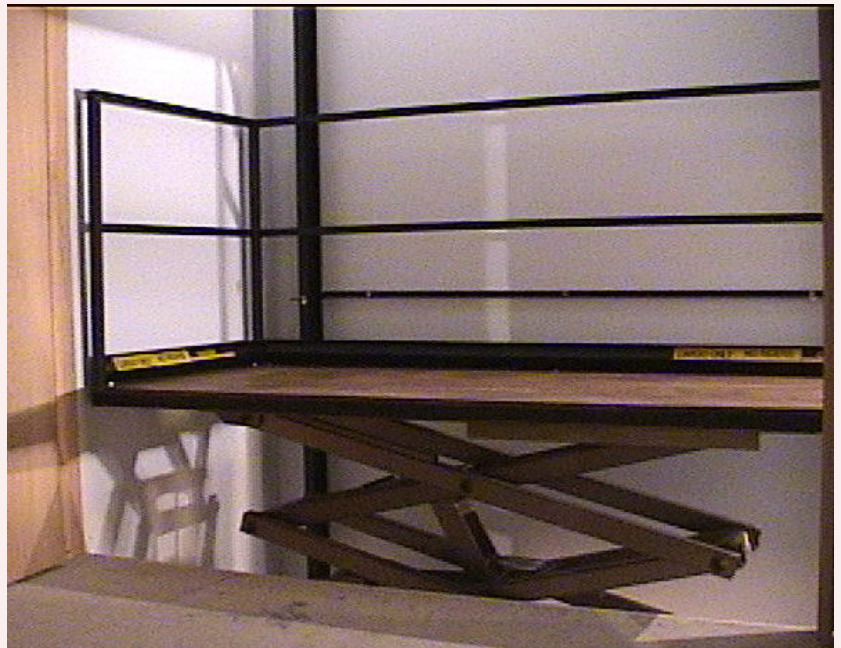
1000 pound capacity

115V AC (20 amps at outlet)

24V Push button controls

Up to 19.5 feet of travel

**Meets ANSI requirements when
combined with enclosures
and interlocked doors**



Accessories:

Multilevel Automated Controls

Additional Railings

Custom Platforms

Trap Doors & Openers

Door Interlocks

Installation



options for exterior access

PO Box 456 2720 E. Progress Dr.
West Bend WI 53095

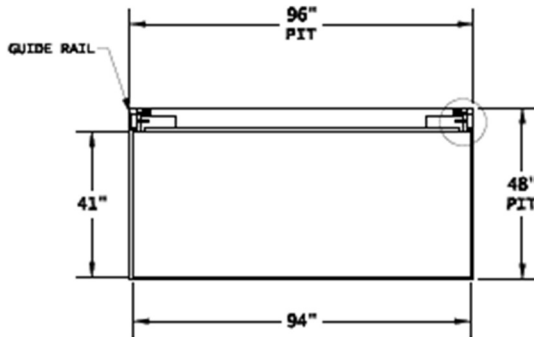
800-375-0335 FAX 312-380-4612
casketlifts.com

PLATFORM SIZE: 41" x 94"

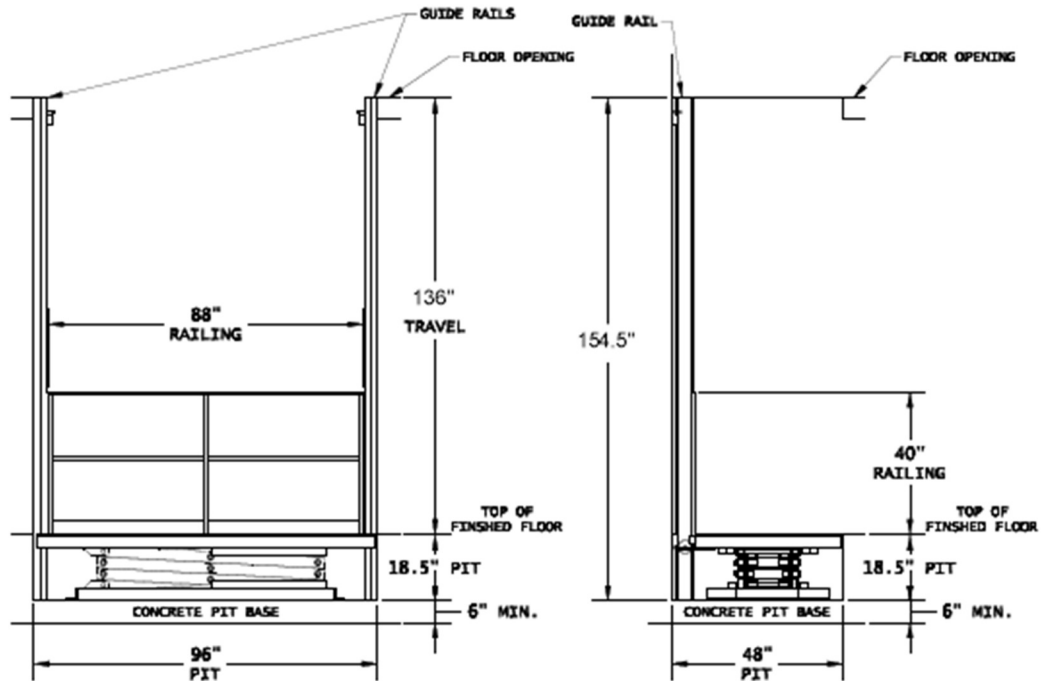
REQUIRED PIT SIZE: 48"W x 96"L x 18.5"D

UPPER FLOOR OPENING: 48"W x 96"L

UPPER FLOOR OPENING MUST BE PLUMB WITH PIT OPENING



SAMPLE



<p>SAFETY FEATURES</p> <p>EMERGENCY DOWN VALVE FLOW CONTROL VALVE OVERLOAD RELIEF VALVE VELOCITY FUSE OVERTRAVEL STOP</p>	<p>SCISSORS FLOOR LIFT - SPECIFICATIONS -</p> <p>NO RIDERS</p> <p>FORSTON & ASSOCIATES P.O. BOX 435 WEST BEND, WI 53095 (262) 338-6000</p>	<p>STANDARD FEATURES</p> <p>1000lb. LIFT CAPACITY 115V, 20amps, PLUG-IN 24V SYSTEM CONTROLS PUSH-BUTTON CONTROL STATIONS</p>
--	--	--